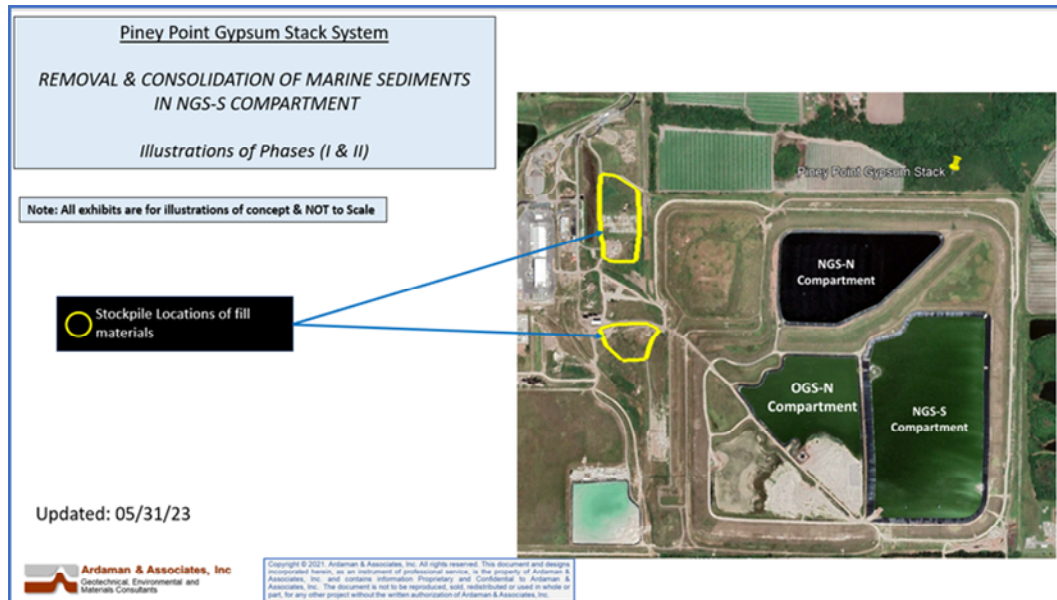


ANNOUNCEMENT #4 - THIRD SET OF QUESTIONS

1. What is the estimated time for the construction of the internal separation berm in NGS-S?
 - **Partition dike (internal separation berm) is part of the preparation work by others (i.e., Not dredging contractor) for establishing the area and the base for geotextile tubes locations #2 prior to the depletion of tube storage capacity at geotextile tube location #1.**
 - **Duration of the construction has not been determined as it depends on field conditions. In collaboration with the dredging contractor, and based on their dredging schedule and proposed approach, construction of the dike will commence sufficiently ahead of time so as to allow the contractor to switch their disposal of the dredged sediments from Location 1 to Location 2/3 without interruptions.**
2. Where are the sand tailings stockpiles located?
 - **See Exhibit below for locations of stockpiles of fill materials. Please note that fill materials at the two stockpile locations are overburden sandy soil and limited volumes of sand tailings. Both types of materials are available for filling gaps between geotextile tubes.**



3. What is the estimated available quantity of sand tailings?
 - **DRS anticipates having over 50,000 cubic yards (loose) of sandy fill materials (NOT all sand tailings) will be available at the beginning of the dredge operations. Additional overburden sandy fill materials will be stockpiled by DRS as needed.**