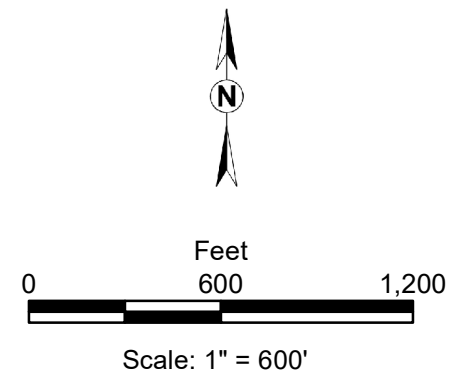
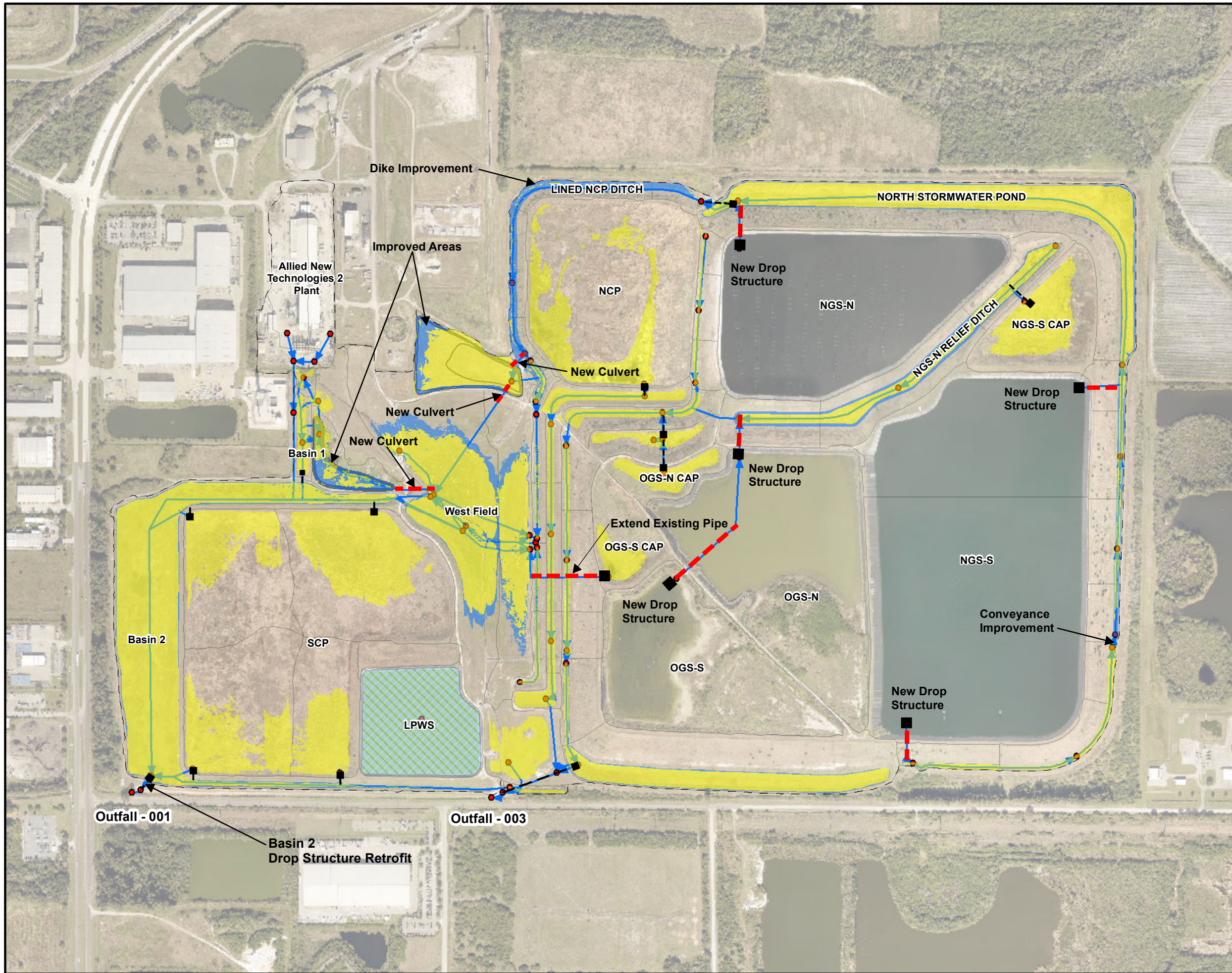


W:\Projects\2021\21-13-0031C_Piney_Point\ArcGIS\ArcLayouts\20220224_Report_Figures\Figure_6 Closure Max Stage Extent.mxd



SOURCE: AERIAL PHOTOGRAPH FROM MANATEE COUNTY, 2020.

- Proposed Closure Approximate 25y/24h Max Stage Extent
- Existing Approximate 25y/24h Max Stage Extent
- LPWS
- Watershed Boundary
- Node
- Reach
- Basins
- New Drop Structure
- New Culvert

**EXISTING AND CLOSURE SCENARIOS
MAXIMUM STAGE APPROX. EXTENTS
25-YEAR 24-HOUR EVENT**

Ardaman & Associates, Inc.
Geotechnical, Environmental and
Materials Consultants

PINEY POINT		
DRAWN BY: SG	CHECKED BY: NA	DATE: 02/22/22
FILE NO: 21-13-0031C	APPROVED BY:	FIGURE: 6